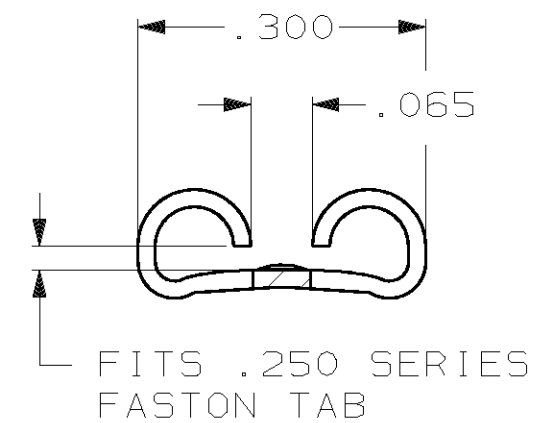
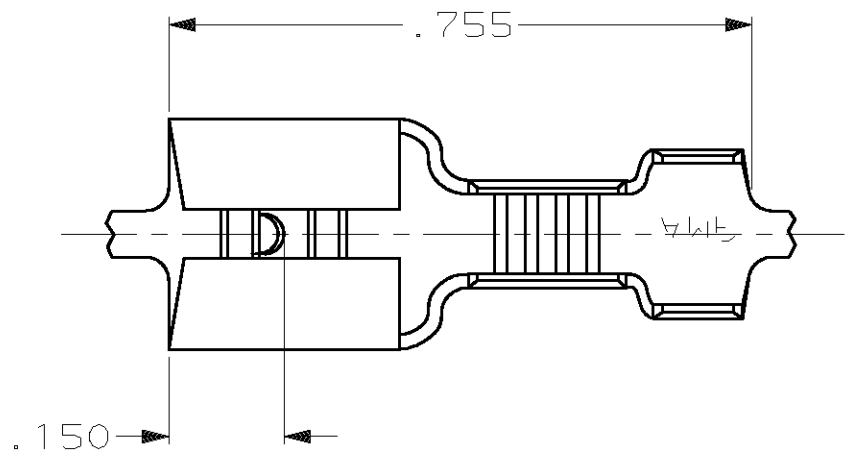


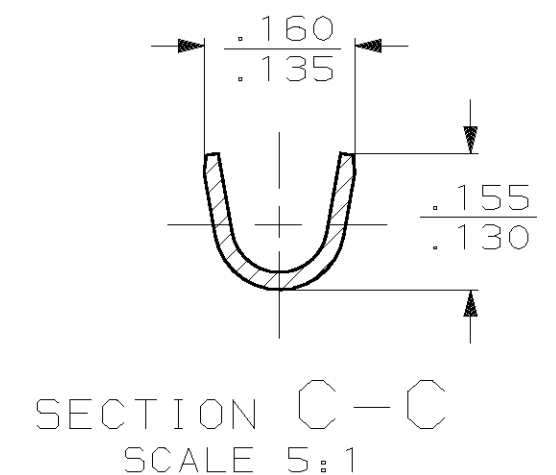
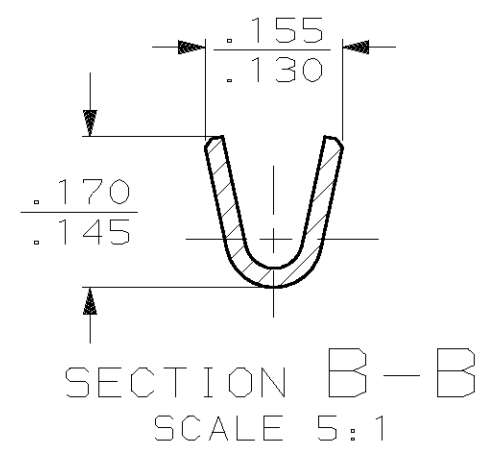
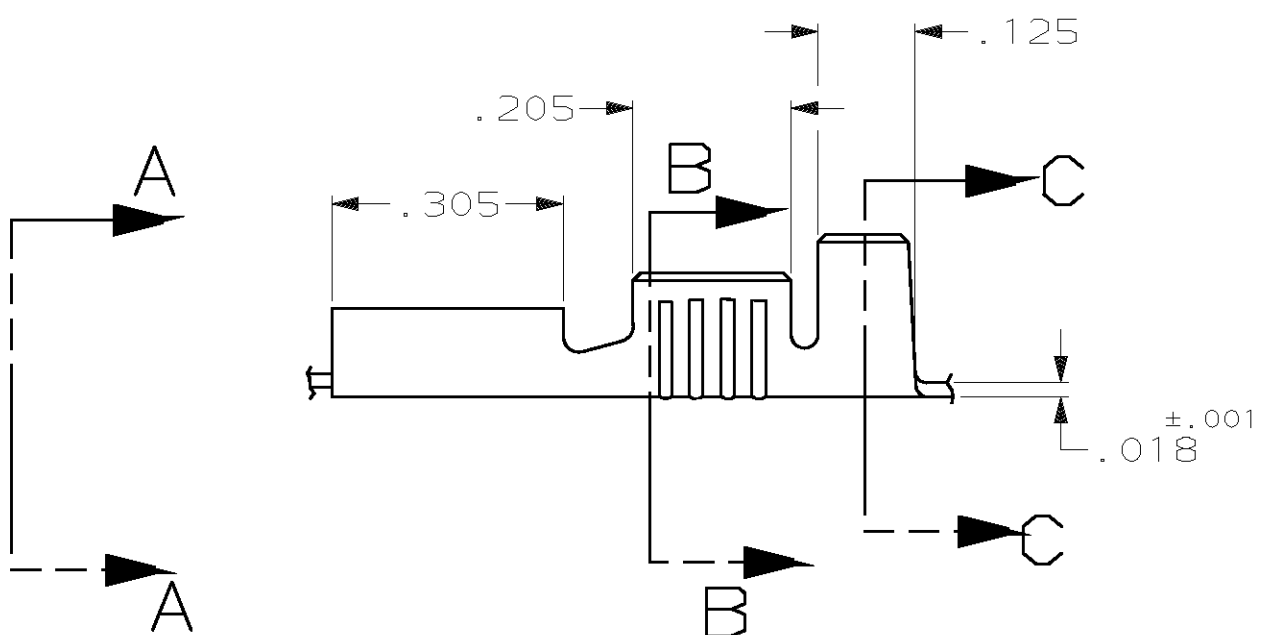
THIS DRAWING IS UNPUBLISHED. RELEASED FOR PUBLICATION, 19
 © COPYRIGHT 19 BY AMP INCORPORATED. ALL INTERNATIONAL RIGHTS RESERVED.

LOC	DIST	P	F	REVISIONS				DATE	APPD
AF	50			ZONE	LTR	DESCRIPTION			
					E	REV PER 063A-0539-02	03SEP02	JR/PD	



- 1 CONTINUOUS STRIP ON REELS
- 2 MATING TAB THK IS .032±.001
- 3 WIRE SIZE IS #18-#14 AWG
- 4 INSULATION RANGE IS .060-.110 DIA.
- 5 PRELIMINARY - NOT FOR PRODUCTION

VIEW A-A
SCALE 5:1



F	.120	.252	F	.120	.075	14
					.066	16
					.061	18
TYPE	WIDTH	STRIP LENGTH ±.015	TYPE	WIDTH	±.002 HEIGHT	WIRE
INSUL BARREL CRIMP			WIRE BARREL CRIMP			

	TIN	H03 PHOS BRONZE	5 61375-3
	TIN	H04 BRASS	61375-1
	FINISH	MATERIAL	PART NO
	DR 7/10/89 JR RUTH	AMP INCORPORATED Harrisburg, Pa. 17105	
	CHK 7/10/89 MS FEHER		
	APPD 7/10/89 C MEYERS		
	APPD 7/10/89 R KUZO	NAME	
	PRODUCT SPEC	RECEPTACLE, FASTON™ .250 SERIES	
	APPLICATION SPEC	SIZE	CAGE CODE
	WEIGHT -	B	00779
		DRAWING NO	61375
		SCALE	4:1
		SHEET	1 OF 1